



Glass Space

South-east London

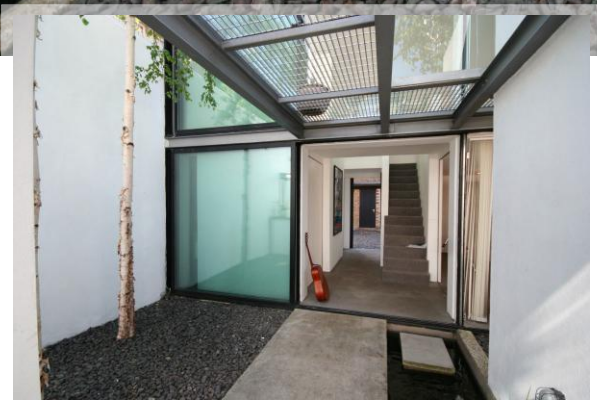
This superb architect-designed modern apartment blurs the distinction between "inside" and "outside" living spaces.

The rooms have floor-to-ceiling sliding glass walls which may be partially opened or completely moved away from the walls to open the minimal interior to minimal exterior.

The main room connects to a separate lounge via a steel and glass walkway with a wide glass bench which mirrors the internal glass bench suspended over the stair well.

From the central courtyard with bubbling water feature, silver birch trees tower into the aerial walkways creating constantly changing areas of space and light.

For further images of this location please see www.locationworks.com/0391



Location Works Ltd
tel: 0844 414 5505 • fax: 0844 515 5506
www.locationworks.com • info@locationworks.com

www.locationworks.com/0391