



Stylish faded-grandeur location with many rooms in varying states of semi-dereliction, north London.

1 / 16



2 / 16



3 / 16



4 / 16



5 / 16



6 / 16



7 / 16



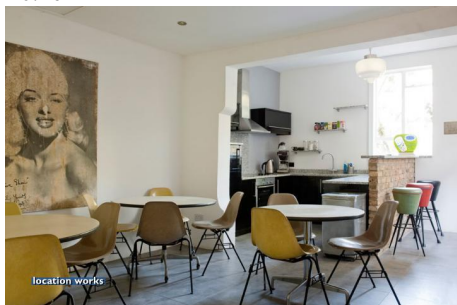
8 / 16



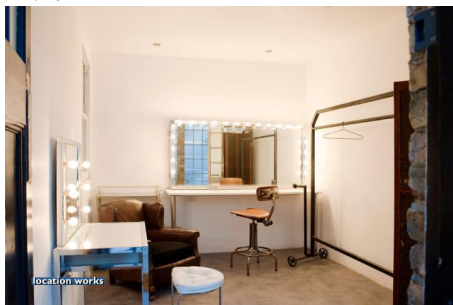
9 / 16



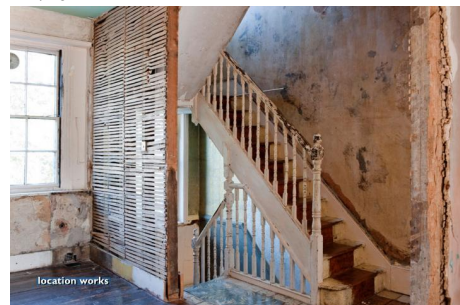
10 / 16



11 / 16



12 / 16



13 / 16



14 / 16



15 / 16



16 / 16

